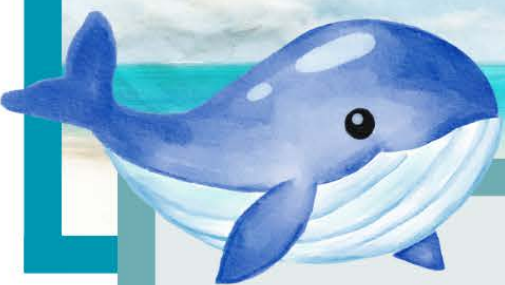


CBC Behavioral Times



Happy June!



Announcements!

Timesheets are due Saturday, June 1st by 10:00 AM.

Happy Father's Day to all!
Happy Pride Month!
Congratulations to the 2024 graduates!

Please don't forget to submit your monthly TIPS punch cards to be included in the monthly raffle!

If there are any changes in scheduling, please continue to inform the scheduling department, Gabe, and your supervisor.

Thank you so much!



ABA Definition of the Month

Consequence Strategies: Consequence strategies are implemented **after** a behavior occurs, during pre-crisis or crisis phases. These strategies dictate how we or others should respond to the problem behavior.

Examples:

- Redirecting the client to use functional communication.
- Reminding the client about the rules to access reinforcement.
- Using **extinction procedures** based on the function of the behavior.

Extinction Procedures:

- Attention Extinction
- Escape Extinction
- Access Extinction
- Automatic/Sensory Extinction

These consequences are listed in your client's Behavior Intervention Plan (BIP) and are individualized for each client. If you are not familiar with your client's antecedent strategies, reach out to your supervisor for clarification.





Friendly Reminders!

If you have not yet submitted your availability for the summer, please make sure to do so ASAP!

Please make sure to submit your SOAP notes daily on Catalyst, and please make sure that your tablets are charged for use during your sessions.

Please don't forget to render your sessions and submit your time in a prompt manner!



Thank you so much!

Joke of the Month!

When you walk by a child tantruming in a store and gotta remember you ain't at work.



Monthly Tip!
Take care during the hot summer months! Remember to use sunscreen with at least SPF 30, wear hats, and seek shade to protect your skin from harmful UV rays.

A collection of colorful seashells and stars in shades of purple, pink, and yellow.

Thank you for all of your hard work!