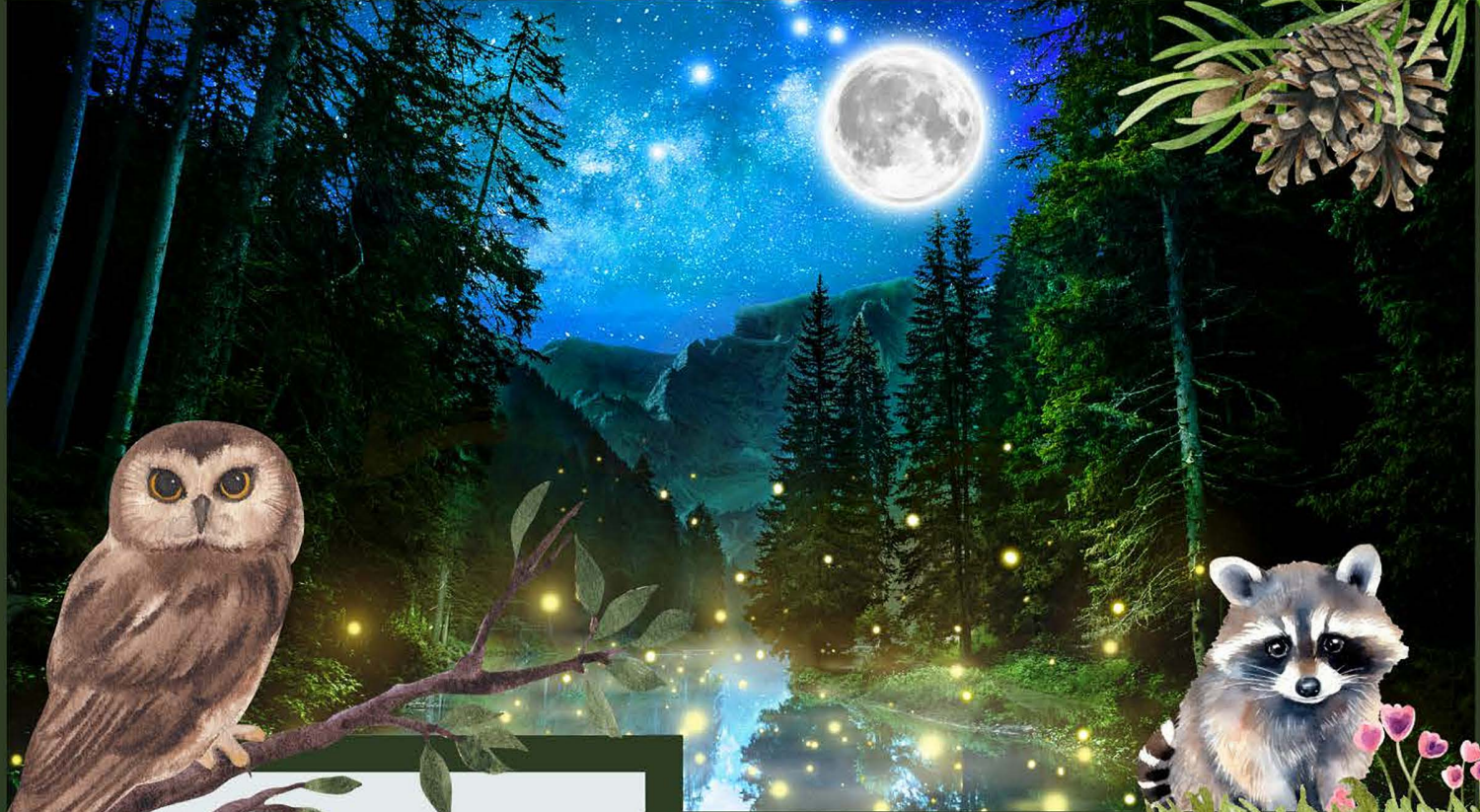




CBC Behavioral Times



Announcements!

Timesheets are due Thursday, August 1st by 10:00 AM.

Please submit your TIPS punch cards to Rebecca at rrios@cbc-autism.com ASAP, in order to be entered into the July raffle.

August Birthdays

- Leslie
- Kathie
- Edyn

Happiest Birthday to All!



Joke of the Month!



Friendly Reminders!

Please remember that personal phone usage is not allowed during session. This includes texting, checking social media or emails, and answering phone calls. Exceptions may be made in case of an emergency, with the supervisor's approval.

The back-to-school season is approaching. If you have any changes in your schedule, please notify the scheduling team as soon as possible.

Please make sure that your client's nails are trimmed before each session to prevent any potential scratching or injury.



Thank you so much!

Monthly Tip!

The sun can be intense! Be sure to apply sunscreen regularly and seek shade whenever possible. Don't forget to carry a reusable water bottle to stay hydrated - it's great for both your health and the planet.



ABA Definition of the Month

ABC Data helps identify the function of an individual's behavior. Behavior serves a purpose; think about your own actions and what you might be trying to communicate through them.

What are the ABCs of behavior?

- A: Antecedent – Events, environment, people, sights, etc., that occur **immediately before** the behavior.
- B: Behavior – The specific behavior that we observe. It must be objectively defined and measurable.
- C: Consequence – The events or responses that occur **immediately after** the behavior – such as reinforcement, extinction, redirection, or punishment.

In ABA, consequences are not always negative. They are natural outcomes that occur because behavior influences the environment.

Why is ABC Data Important?

Supervisors analyze the data you collect to identify patterns and the function of the behavior. Once a cause-and-effect relationship is established, the environment can be modified to help reduce or increase certain behaviors.

Examples of ABC Data Collection:

Antecedent	Behavior	Consequence
Parent tells Jenny to clean her room.	Jenny starts to cry and tantrum.	Parent puts Jenny in time out and begins to clean her room.
Teacher is at another student's desk assisting with work.	Tim begins to throw items across the room.	Teacher approaches Tim and tells him to stop.
A peer takes Sarah's doll away from her.	Sarah hits the peer.	The peer drops the doll. Sarah picks it up and begins playing with it again.



Thank you for all of your hard work!